

## Madras<sup>®</sup> Pixel Gradient

### Technical data sheet

Rev. 03.09.2018

**Manufacturer:** Vitrealpecchi spa

**Designer:** Arch. Ivo Pellegrini

**Base product:** float glass to EN 572 1-2;  
laminated float glass to UNI EN ISO 12543.

**Description:** glass chemically rendered permanently opaque on one side and characterized by a perfectly smooth texture featuring transparent points of gradually changing sizes to provide screened vision.

**Shielding zone disposition on the sheet:** standard (diagrams on request) so that it can be cut and optimized for the more common applications (walls, doors, balconies).

**Sheet sizes:** 2250/2400 x 3210 mm (usable: 2210/2360 x 3170 mm).

**Thicknesses:** monolithic float glass 4/5/6/8/10/12 mm; laminated float glass 33.1.

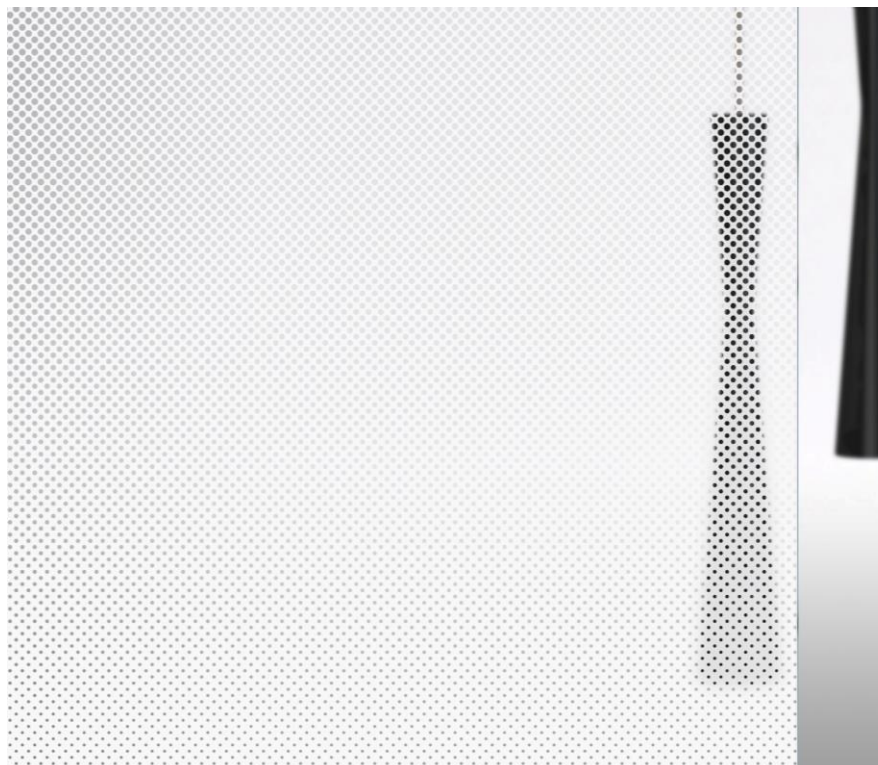
**Colours:** extraclear, clear.

*Availability of standard colours/thicknesses is subject to change. Please verify when ordering.*

**Weight:** 2.5 kg/m<sup>2</sup> per millimetre of thickness.

**Performances:** the particular structure of the texture and the process to which the surface of the glass is subjected, give rise to a graded visibility, influenced by the light intensity on the two faces also.

**Applications:** in interiors requiring screened vision – limited to a single visual “band” - but also progressive visibility reaching almost complete transparency, thus enhancing luminosity in spaces such as offices, meeting rooms, receptions, restricted areas; in exteriors, especially partially screened parapets and shelters.



Colours and finishings in the photographs may look slightly different from those of the real products: we recommend that customers examine sample glass before choosing products.

## Madras® Pixel Gradient

**Compatible processing:** all mechanical and thermal processes compatible with the base material: cutting, grinding, bevelling, drilling, laminating, toughening, bending, double glazing, painting, enamelling etc.

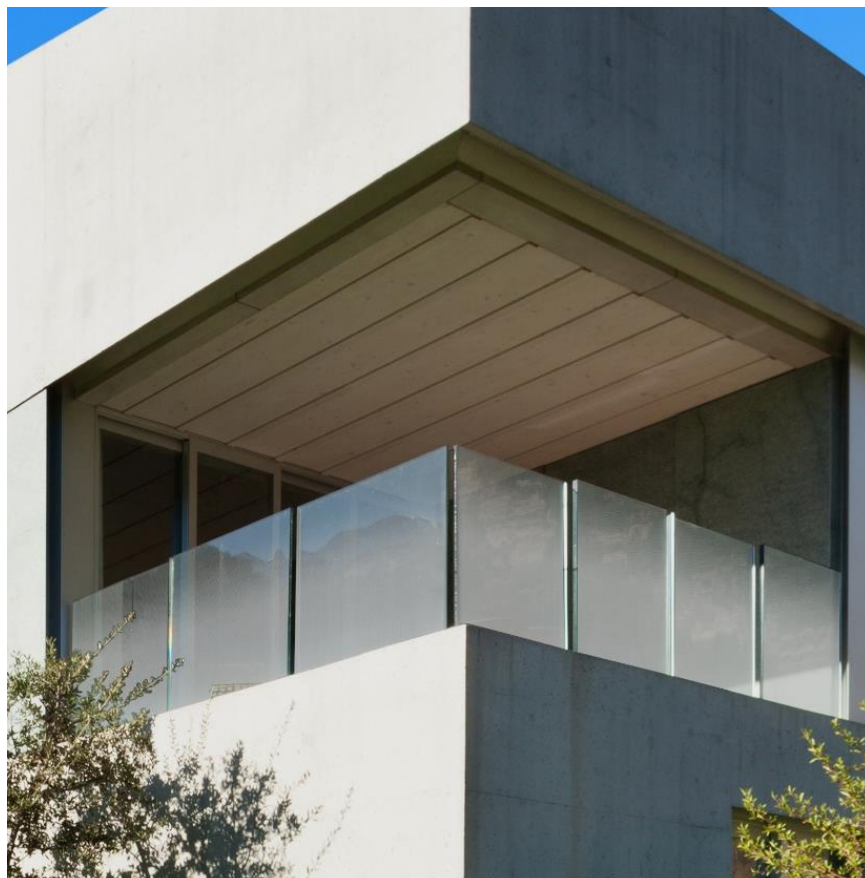
**Cleaning:** care must be taken when installing the glass not to get putty, resin, sealants, etc., on the treated side. Each of these substances requires a specific solvent for removing traces from glass. For routine maintenance, use water and/or any of the commonly marketed glass detergents. Dry immediately with a clean cloth - preferably micro-fibre - by wiping repeatedly gently in the same direction.

**Storage and handling:**

- it is advisable to unpack immediately after reception and store in a dry, well-ventilated place free from sudden changes of temperature to avoid condensation;
- never store outdoors;
- when storing for over 3 months, it's advisable to remove the paper from between the plates;
- in case of storage in unfavourable environmental conditions (high humidity and strong temperature changes), it is advisable to slightly space one plate from another;
- storing for more than 12 months is not advisable;
- to avoid scratching the surface of the glass during handling and storage, plates should always be separated by means of spacers.

**Acceptance limits of the defects coming from float glass production and satin finish processing** as per UNI EN 572.2.

**Acceptance limits of the defects coming from satin finish processing:** defects visible from a distance > 1,5 mt.



Colours and finishings in the photographs may look slightly different from those of the real products: we recommend that customers examine sample glass before choosing products.